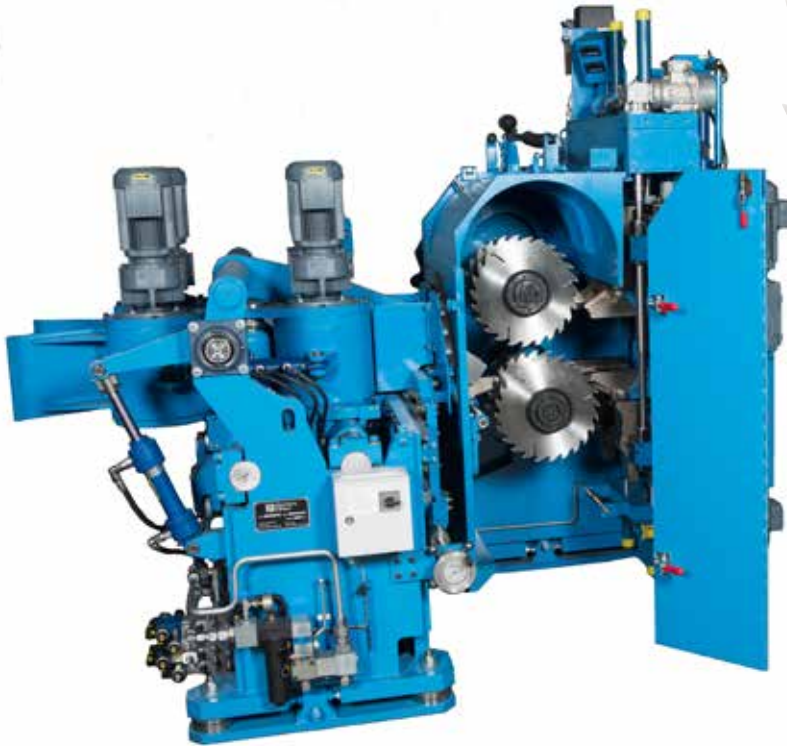
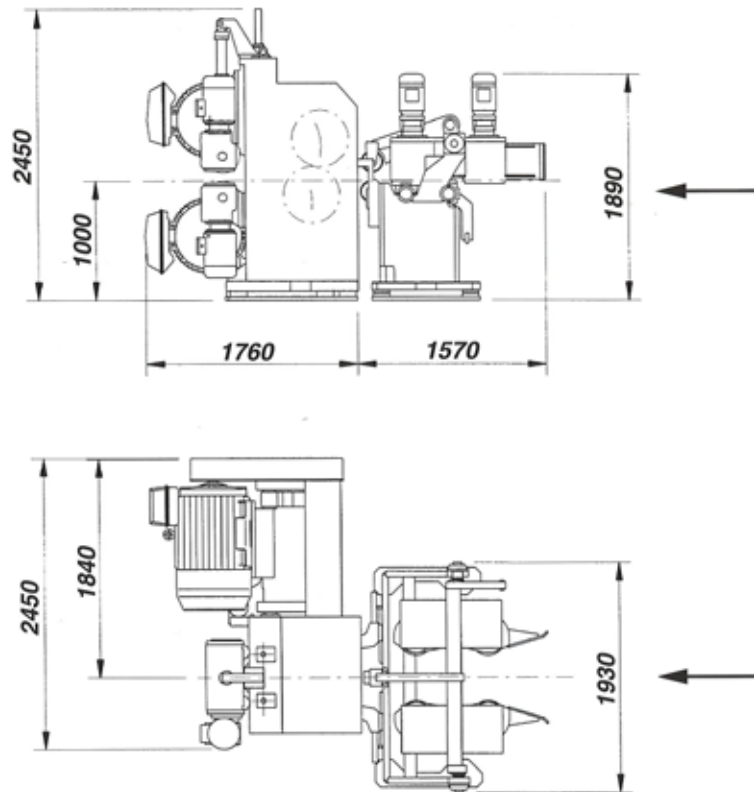


EuroSaw FDP



A compact, highly efficient profiling resaw

EuroSaw FD is a fixed-setting, twin-arbor circular saw that produces up to four finished sideboards while breaking down the centre goods. The machine has a stable frame with setting arbors for optional saw blade dimensions, which means you can always saw with the thinnest possible kerf. A unique arbor design enables the EuroSaw FDP to curve-saw with high dimensional accuracy. For maximum availability, the saw blades are installed on tool sleeves that are pushed onto the arbors and secured with a quick-locking mechanism.



Eurosaw FDP TECHNICAL SPECIFICATIONS

Max. feed speed	150 m/min
Max. cant height	300 mm
Max. centre goods width	370 mm
Min. curve-sawing radius	50 m
Power rating	332-512 kW
Saw blade dia	400-530 mm
Oil consumption	10 l/min
Weight	11 550 kg

These data are approximate and given without obligation.

